



The versatile
way to connect



expedia group™
partner solutions

For more than a decade, we've been powering the hotel business of the world's leading airlines, travel agencies, and consumer and loyalty brands to help them to innovate and win in travel.

Our versatile API, EPS Rapid, is built on the latest technology to power your hotel business. Bringing you access to a great customer experience, maximizing your revenue, driving conversion rates, and backed by end-to-end support.

Create the best customer experience

Access 700,000+ accommodations, with rich content and imagery to help travelers make the best choices.

- Wide range of different property types, from apartments and hotels to house boats, for all customer needs.
- Over 13 million rich property images and 7.5 million room images, each with clear and distinct captions across 40 different languages.
- Over 400k intelligent geography definitions that match geography searches to where travelers want to stay.
- Allow travelers to edit their booking details that don't impact the cost or schedule supplier cancelations.

Key features

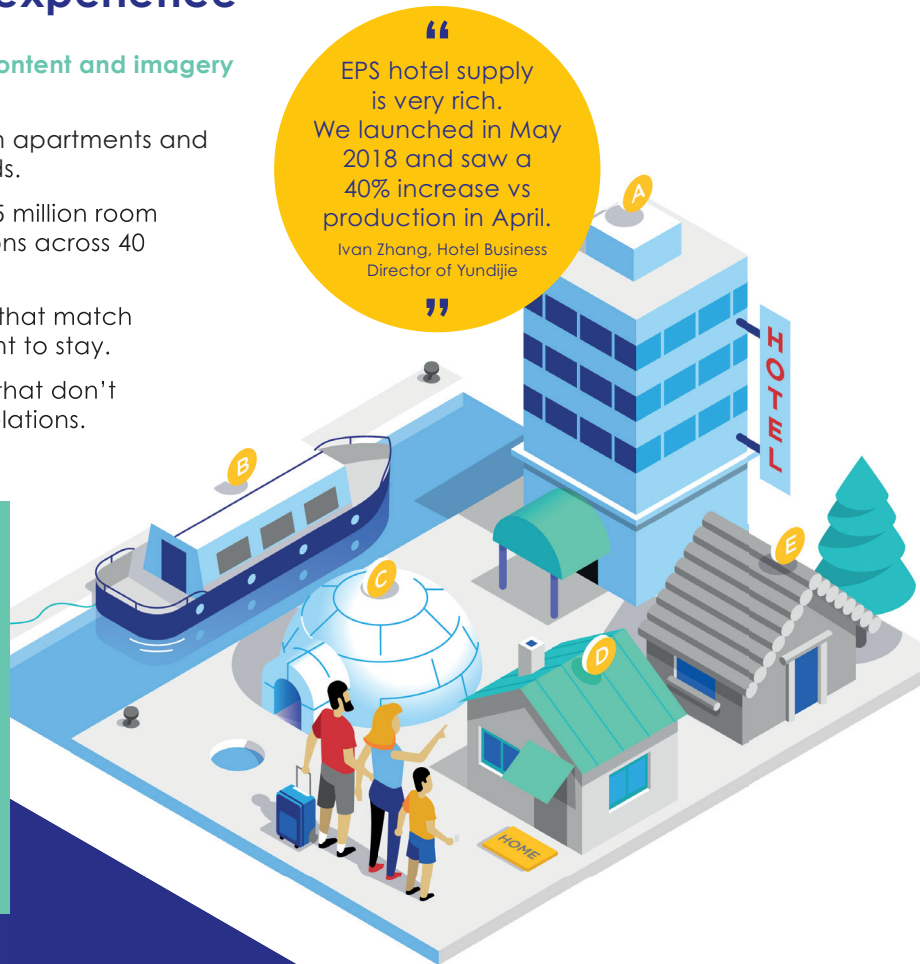
- **Curate your inventory** by filtering our content to show what's most relevant to your travelers.
- Pass on **tailored traveler payment instructions** to properties to reduce supplier cancelations.
- **Hold a rate for up to 10 minutes** whilst you finalize other aspects of a booking.

“

EPS hotel supply is very rich. We launched in May 2018 and saw a 40% increase vs production in April.

Ivan Zhang, Hotel Business
Director of Yundijie

”



Drive conversion rates and maximize revenue

Maximize your revenue with a variety of deals and rates, and flexible payment methods.

- Rates to suit varying traveler needs including 650k+ deals, with over half offering more than 10% off, and additional traveler benefits available at over 17k properties globally.
- Options to pay at the time of booking or at the property.

Key features

- Maximize your revenue with access to **high-margin B2B rates** from leading global hotels like Marriott International and more.
- Give travelers more flexibility by letting them **leave a deposit** and pay the remaining balance at check-in.



“

Implementing EPS Rapid has been exciting, and has introduced new opportunities for our business - from in-depth API documentation, technical consultation and strategic discussions.

Kristina Simkins, Director of Product Development at onPeak

”

Set-up and manage the API quickly and easily

Our modular format allows for versatility to suit your travel business, with long-term support to assist you through integration, optimization and business growth.

- Modular architecture lets you integrate only what you need in a way that suits your business.
- A simple API path with URL linking for intuitive integrations, targeted requests, and delivering only the necessary data.
- Get access to the latest features as soon as they're ready, without the need to upgrade. Saving you time and money with no breaking changes and fewer deprecations to plan for.
- Our developer site gives you access to API schemas, extensive developer documentation, and reference documentation too, for a richer experience.
- Backed by our unrivalled EPS partner expertise and customer service support, we are with you for the long term.

“
The integration has been carried out at a good pace, thanks to the good documentation available online and fluid communication with the support team.
”

Joaquin Castro, IT Integration Manager of Tour Diez



Learn more about



expediapartnersolutions.com

